

DocuPrint
CM505



DocuPrint CM505 Colour MultiTouch MFD

Maximises Power, Efficiency
and Space at the Office



The Ultimate Performer for the Productive Office

The new **DocuPrint CM505** is a powerful multifunction device that maximises efficiency for workgroups. With advanced features and high-end multifunction capabilities, it enables workgroups to consolidate existing print fleets and achieve the highest levels of productivity. In fact, the **DocuPrint CM505** is so powerful and versatile, one single unit effectively performs the job of several lower-end multifunction devices, faster and more reliably. Print, copy, scan, email and fax (optional) with absolute ease with the **DocuPrint CM505** – designed especially for medium to large workgroups.



All-round Performance that Astounds

All-in-one functionality gives you the power to print, copy, scan, email and fax (optional) in one compact unit. And with the Fuji Xerox multi-tasking network controller, all these tasks can even be performed simultaneously.

A high-speed 45 ppm print and copy rate, along with a first-page-out time of less than 10 seconds for colour prints and 9 seconds for black-and-white prints mean you never waste a second in the office.

Superb 1,200 x 1,200 dpi maximum resolution puts brilliant high-intensity print capabilities at your command. Create dazzling prints with amazing detail, in-house and in seconds!

Does Much More, More Easily

Intuitive simplicity at a touch. Easily access machine functions with the large 7" WVGA touch screen with feature icons for easy navigation.

Store print settings and save time. Define and set the paper sizes, finishings, covers, sizes and more for your favourite document sets with the intelligent print driver.

CentreWare Internet Services is an innovative web-based tool for administrators to remotely monitor and manage tasks. It works with any common web browser and there's no need for software installation. With it, you can configure devices, upload address books, monitor usage and consumables, and even enable driverless printing for remote users via any connected computer without the need for a print driver.

Convert hard copies to text-searchable PDFs in just one step*. Just scan the document to create a text-searchable PDF for much easier archiving, organising and information retrieval.



Send scans with ease. LDAP integrates scanning with your network address book. Simply scan then send!

Direct USB file retrieval*. Simply plug your USB memory device to the USB port to scan or print files quickly and directly.

*Optional DocuPrint CM500 Series Upgrade Kit is required.

* Black-and-white documents only. Optional DocuPrint CM500 Series Upgrade Kit is required.



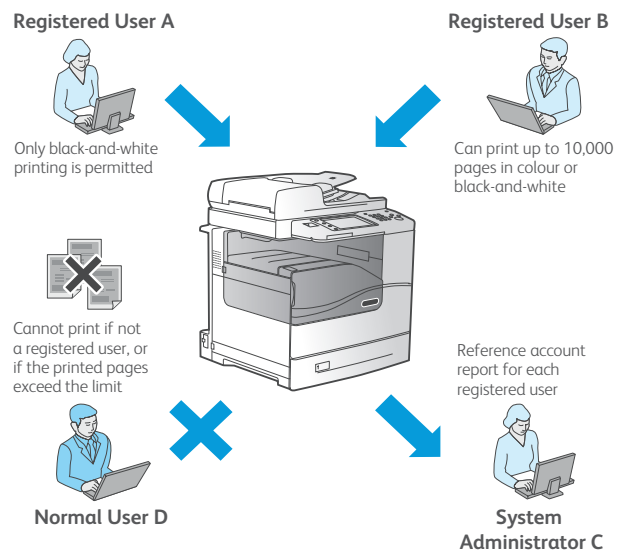
Saves Earth and Expenses

Low power consumption – In sleep mode, the **DocuPrint CM505** only consumes 16W, and just 155W in standby mode. Even for the most intensive operations, power usage is maximised at a low 1.76Kw (at 220V).

Cost and paper savings – Reduce costs and paper usage by printing multiple pages per sheet with the N-up feature, which works for Microsoft Word documents, PDFs, web pages and more. Further savings are easily achieved by setting default duplex printing.

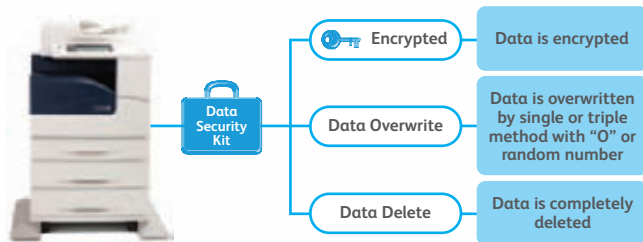
Electronic fax lets you perform paperless fax functions to eliminate wastage and enhance productivity. Incoming faxes can be routed to designated email addresses, folders or network-connected PCs for on-demand retrieval and distribution.

Control and manage colour usage with FX Auditron. With it, you can define user usage limits for colour printing. This makes it easier to track, analyse and manage print expenses.



Secures Data at Every Level

- **Secure Print** keeps documents private by holding print jobs in the queue until the user enters the password.
- **Password protected PDFs** – Requires a password to open and view a sensitive scan.
- **Data Security Kit*** – Provides features such as Data Encryption, Data Overwrite and Data Delete.



*Optional DocuPrint CM500 Series Upgrade Kit is required.

- **Network Authentication** – Restricts access to device features and management settings by validating user names and passwords.

- **IEEE 802.1X protocol** ensures devices connected to the network are properly authenticated.

- **IPv6 support** opens up additional IP addressing opportunities across the internet and inside enterprise firewalls. Provides additional network security, better network routing and configuration, and improved support for high volume printing and larger print jobs.



- **IPsec data encryption.** You can also ensure the security of your data when transmitting it over a network by encrypting it with the IPsec feature.
- **SNMPv3** (Simple Network Management Protocol) systems provide secure access to devices over the network.

Expansion Options for Added Value

Configure your DocuPrint CM505 to best meet workgroup requirements with the wide range of add-on possibilities. The basic 700-sheet unit expands up to a 2,350-sheet holding capacity for ultimate versatility.

Create even more possibilities with the optional Finisher AB1 unit. It automatically sorts, stacks and staples documents, ensuring maximum efficiency and productivity.



- Standard 550-sheet paper tray
- Total 700-sheet capacity



- One tray option 550 sheets
- Total 1,250-sheet capacity



- Two tray option 1,100 sheets
- Total 1,800-sheet capacity

Specifications of DocuPrint CM505

Print Function

Print Speed	Simplex: 45ppm (Mono/Colour) Duplex: 36ppm (Mono/Colour)
Print Resolution	1200 x 1200dpi, 600 x 600dpi (Standard)
Maximum Duty Cycle	110,000 pages / month
First-page-out Time	Up to 9 sec for Mono and 9.5 sec for Colour
Warm-up Time	42 sec or less (when powered on) 26 sec or less (from low power mode)
Memory	2GB
Processor	Power PC 1GHz
PDL	PCL6, PCL5, TIFF, FX PDF, XPS, Adobe Postscript 3, HP GL, HP GL2.
Connectivity	Ethernet 1000 BASE-T/100 BASE TX/10 BASE-T, USB 2.0
Supported Operating System	Microsoft Windows 2000, Microsoft Windows XP, Microsoft Windows Vista, Microsoft Windows 7, Windows Server 2003 & 2008, Mac OS 9.2.2, x10.3.9 - 10.4.11 (except 10.4.7), x10.5/10.6
Paper Size	Paper Tray 1-4: A4, A5, B5 JIS, Legal, Folio, Letter, Executive, Custom Paper (Width: 98x216mm Length: 190x356mm) Paper Tray 5 (MSI): Custom Paper (width 76x216mm, Length: 127x356mm).
Paper Weight	Paper Tray 1-5: 60-216gsm
Media Input Capacity	Standard (700 sheets): Standard tray (550 sheets) + Bypass Tray (150 sheets) Max (2,350 sheets): Standard Tray (700 sheets) + 1 Tray Module (550 sheets) + 2 Tray Module (1,100 sheets)
Media Output Capacity	500 sheets
Dimensions (W x D x H)	560 x 536 x 629 mm
Weight	56 kg
Power Supply	AC 220 - 240 V \pm 10% / AC 110 V \pm 10%, 10/15 A for both 50/60 Hz \pm 3%
Power Consumption	Max: up to 1.76kW (220V) 1.65kW (110V) Standby mode: up to 155W (220V) up to 140W (110V) Sleep mode: up to 16W (220V): up to 15W (110V)
Noise Levels (B(A))	Up to 7.48B (during operation) Up to 5.3B (during stand-by)
Warranty	One year on-site warranty

Copy Function

Copy Speed (A4)	Simplex: 45ppm (Mono/Colour) Duplex: 36ppm (Mono/Colour)
Copy Resolution	600 x 600dpi
First Copy Out Time	Platen: 7.8 sec (Mono) 9.8 sec (Colour) DADF: 9.8 sec (Mono) 11.8 sec (Colour)
Reduction / Enlargement	25% - 400%
Continuous Copy	999 sheets
Copy Features	2 sided book copy; booklet creation; duplex; multi-value copy

Descriptions in this material, product specifications and/or appearances are subject to change without prior notice due to improvements. Please note that the product colour appears differently from the actual colour as a result of properties of papers or printing ink. Windows is a registered trademark of Microsoft Corporation. Macintosh, Mac OS and Ether Talk are trademarks of Apple Computer, Inc. Other company names or product names are registered trademarks or trademarks of each company.

For Your Safe Use

- Before using the product, read the Instruction Manual carefully for proper use.
- Use the product with an appropriate adequate power source and voltage displayed.
- Be sure to establish a ground.
- In the case of a failure or short circuit, an electric shock may result.

Scan Function

Type	Colour Scanner
Scan Speed	Mono: 45ppm ; Colour: 45ppm
Scanning Resolution	Up to 600 x 600dpi
Scan Features	Scan to PC. Scan to e-mail. Scan to folder. Scan to USB*.

*Optional DocuPrint CM500 Series Upgrade Kit is required.

Fax Function (Optional)

Document Size	Max: 215.9 x 355.6mm
Fax Resolution	Up to 600 x 600dpi
Transmission Speed/Time	Maximum: G3 - 3 sec
Fax Features	Direct Fax, Internet Fax

Consumables

Black toner (up to 16,000 pages)	CT201680
Cyan Toner (up to 12,000 pages)	CT201681
Magenta Toner (up to 12,000 pages)	CT201682
Yellow Toner (up to 12,000 pages)	CT201683
Drum (50,000 each for Black, Cyan, Magenta and Yellow)	CT350899 (K) CT350900 (C) CT350901 (M) CT350902 (Y)
Waste Toner Box (up to 25,000 pages)	CWAA0809
Fuser Unit (up to 100,000 pages)	CWAA0810 (AP 220V) CWAA0811 (TW 110V)
Feed Roller Unit (up to 150,000 pages)	CWAA0812
Staple Cartridge for AB1 (3pcs of 5,000 staples for total of 15,000 staples)	CWAA0540

Declared yield in accordance with ISO / IEC 19798. Yield may vary depending on image, area, coverage and print mode (job length, media size, media type and orientation).

Printer is shipped with one set of standard toner cartridges.

Accessories

1 Tray Module (550 sheets)	E3100032
2 Tray Module (1,100 sheets)	E3100033
Finisher AB1* (Stack: 1,000 sheets (unstapled) Staple: max 50 sheets)	E3100031
DocuPrint CM500 Series Upgrade Kit (HDD Extension, Data Security Kit, USB Media Print, Searchable PDF, Scan to USB, USB Cable)	E3100055
Fax Kit	E3100043
IC Card Gate Installation Kit	E3100052
IC Card Reader*	E9100100
IC Card Reader M/C Cable 95cm* (extended cable length)	E9100054
Table Adapter for IC Card Gate	E3100053

NOTE: *Optional DocuPrint CM500 Series Upgrade Kit is required.



Reproduction Prohibitions Please note that reproduction of the following is prohibited by law. Domestic and overseas bank notes and coins, government-issued securities, national bonds and local bond certificates. Unused postage stamps and post cards. Certificate stamps stipulated by law. The reproduction of works for copyright purposes (literary works, musical works, paintings, engravings, maps, cinematographic works, photographic works, etc.) is prohibited except when they are reproduced personally, at home or within limited range according to the above. This product is equipped with an anti-counterfeit feature. This feature is not intended to prevent illegal reproduction. Be extremely careful about the management of equipment used.

For more information or detailed product specifications, please call or email or visit our website at:

Fuji Xerox Asia Pacific

14a Rodborough Road Frenchs Forest NSW 2086

Australia 1300 793 769

New Zealand 0800 993 769

www.fujixeroxprinters.com.au

www.fujixeroxprinters.co.nz

